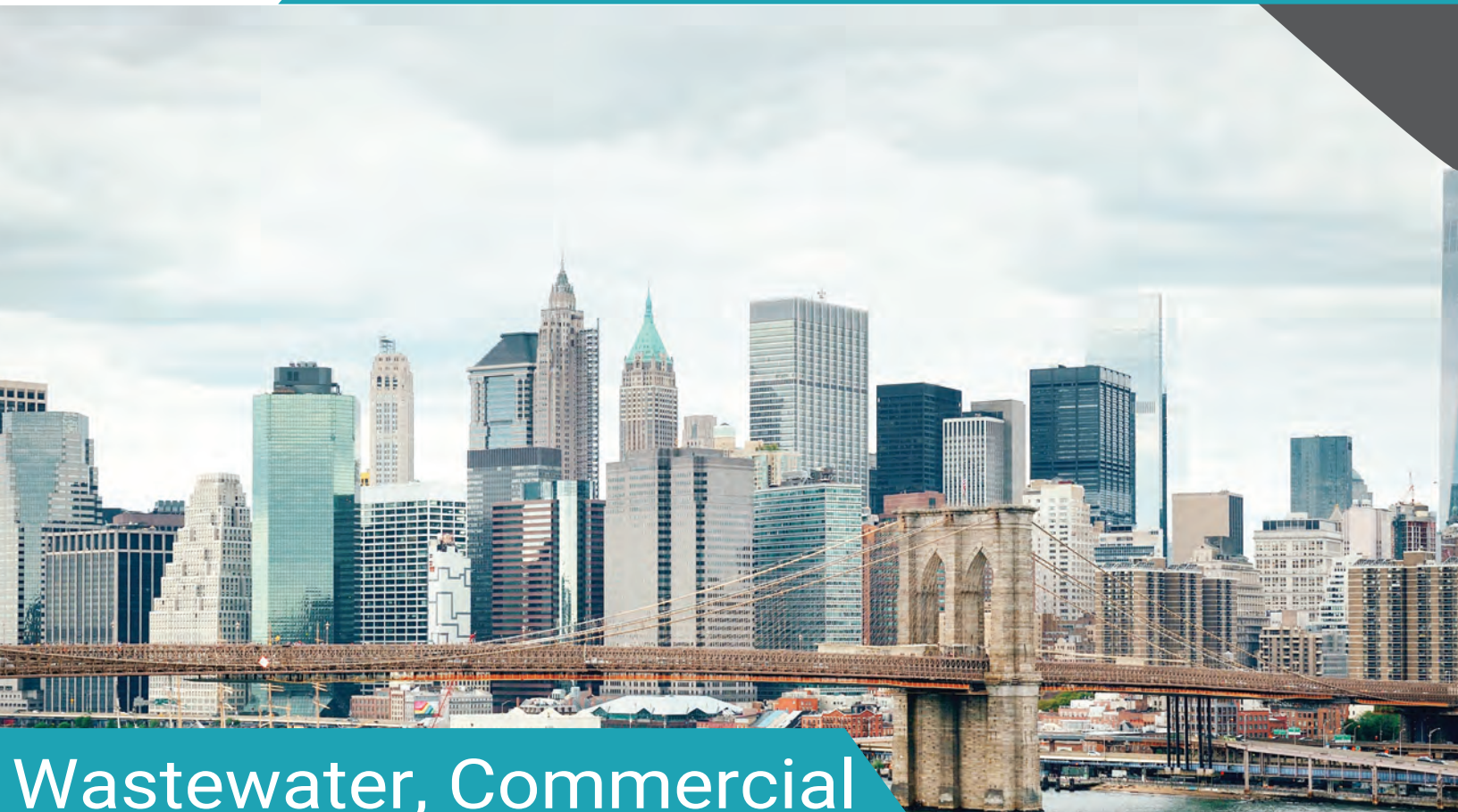




Power-Flo Pumps & Systems

a Power-Flo Technologies company

**ENGINEERED PUMP PRODUCTS
FOR REAL SYSTEM SOLUTIONS**



**Wastewater, Commercial
& Dewatering Solutions**

CONTENTS

Sump Pumps	3
Effluent Pumps	4
Sewage Pumps	5-8
Grinder Pumps	9
Water-Feature Pumps	10
Dewatering Pumps	11
Self-Priming Pumps	12-13
End Suction Pumps	13
Wet Rotator Circulator Pumps	14-15
Accessories	16-18
Control Panels	19
Service	20



Power-Flo Pumps & Systems

a Power-Flo Technologies company

SUMP & EFFLUENT PUMPS

Sump & Effluent Pumps

PFSPPPP3328601 Series

Total Head	Flow GPM	Flow GPH
0'	60	3600
5'	57	3400
10'	50	3000
15'	42	2500
20'	32	1900
25'	17	1000



Models	PFSPPPP3328601M10 PFSPPPP3328601F10 PFSPPPP3328601T10
HP	1/3
RPM	3450
Electrical	115/1
Max Lift	28 Ft
Max Pressure	12.4 psi
Cord Length	10'/20'
Construction	Thermoplastic
Impeller	Thermoplastic
Solids	1/4"
Discharge	1-1/2" NPT Vertical w/1-1/4" Adapter
Automatic Operation <i>(level control type)</i>	T = Wide Angle F = Fixed Vertical

Sump & Effluent Pumps

PFSPCPC5030721 Series

Total Head	Flow GPM	Flow GPH
0'	72	4300
5'	65	3900
10'	58	3500
15'	52	3100
20'	42	2500
25'	28	1700



Models	PFSPCPC5030721M10 PFSPCPC5030721F10 PFSPCPC5030721T10
HP	1/2
RPM	3450
Electrical	115/1
Max Lift	30 Ft
Max Pressure	13.2 psi
Cord Length	10'/20'
Construction	Cast Iron
Impeller	Thermoplastic
Solids	1/4"
Discharge	1-1/2" NPT Vertical w/1-1/4" Adapter
Automatic Operation <i>(level control type)</i>	T = Wide Angle F = Fixed Vertical



Power-Flo Pumps & Systems

a Power-Flo Technologies company

EFFLUENT PUMPS

PFSTEP512 • PFSTEP522

Effluent Pumps

Model	PFSTEP512	PFSTEP522
HP	1/2	1/2
RPM	3450	3450
Electrical	115/1	230/1
Shut Off (ft)	80'	80'
Cord Length	20'	20'
Construction	Cast Iron	Cast Iron
Impeller	polypropylene with SS insert	
Discharge	2"	2"



Total Head	MODEL (gpm)	
	PFSTEP512	PFSTEP522
5'	76	76
20'	63	63
40'	45	45
60'	24	24
70'	11	11

PFEV512

Effluent Pumps

Model	PFEV512
HP	1/2
RPM	3450
Electrical	115/1
Shut Off (ft)	49'
Cord Length	20'/30'/50'
Construction	Cast Iron
Impeller	Cast Iron
Solids	3/4"
Discharge	2"
Automatic Operation <small>(level control type)</small>	mech float vert float



Total Head	MODEL (gpm)	
	PFEV512	
5'	62	
10'	58	
20'	50	
30'	38	
35'	30	
40'	17	
45'	7	



Power-Flo Pumps & Systems

a Power-Flo Technologies company

SEWAGE PUMPS

Sewage Pumps

PFS & PFV Series



Pump Body Cast Iron Construction
Impeller Cast Iron, Vortex design on PFV512 and PFS531TW

- Carbon ceramic mechanical seal
 - Inboard seal on PFS411/421 and PFV512
 - Mechanical wide angle (A) or Vertical float (VF) versions available for automatic operation.
 - Manual pumps require external control
- * High Temperature model for 200°F applications

MODEL	HP	Volts/ Ph	RPM	Discharge Size	Max Solids	Cord Length	Max Head	Max GPM	Economy Control Panel	
									Simplex	Duplex
PFS411	4/10	115/1	1750	2"	2"	20 ft	25	116	PF100	PF200
PFSE411A	4/10	115/1	1750	2"	2"	20 ft	25	116	N/R	N/R
PFSE411VF	4/10	115/1	1750	2"	2"	20 ft	25	116	N/R	N/R
PFS411HT*	4/10	115/1	1750	2"	2"	15 ft	25	116	PF100	PF200
PFS421	4/10	230/1	1750	2"	2"	20 ft	25	116	PF103	PF203
PFS531TW	1/2	115/1	3450	2"	2"	20 ft	20	62	PF100	PF200
PFS531TWA	1/2	115/1	3450	2"	2"	20 ft	20	62	N/R	N/R
PFS531TWA1	1/2	115/1	3450	2"	2"	20 ft	20	62	N/R	N/R
PFV512	1/2	115/1	3450	2"	2"	20/30 ft	20	90	PF100	PF200
PFV512A	1/2	115/1	3450	2"	2"	20/30 ft	20	90	N/R	N/R
PFV512VF	1/2	115/1	3450	2"	2"	20/30 ft	20	90	N/R	N/R

See page 20 for Standard Panels and options.

N/R = Not Required



Power-Flo Pumps & Systems

a Power-Flo Technologies company

SEWAGE PUMPS

PFSWCPC50 & 75 Series

Sewage Pumps



Pump Body: Cast Iron Construction
Impeller: Thermoplastic
Seal: 1/2Hp, Lip seal Rubber and Stainless
 3/4Hp, Single, Carbon/Ceramic
Float: Mechanical wide angle Tethered (T) or Vertical fixed float (F) versions available for automatic operation.



MODEL	HP	Volts/Ph	RPM	Discharge Size	Max Solids	Cord Length	Max Head	Max GPM
PFSWCPC50181081T10	1/2	115/1	3450	2" NPT	2"	10 Ft	18 Ft.	108
PFSWCPC75201451F10	3/4	115/1	1750	2" NPT	2"	10 Ft.	20 Ft.	145
PFSWCPC75201452F10	3/4	230/1	1750	2" NPT	2"	10 Ft.	20 Ft.	145
PFSWCPC75201451T10	3/4	115/1	1750	2" NPT	2"	10 Ft.	20 Ft.	145
PFSWCPC75201452T10	3/4	230/1	1750	2" NPT	2"	10 Ft.	20 Ft.	145

PFSEP5010 Series

Sewage Pump Package

PFSWCPC50181081T10		
Total Head	Flow GPM	Flow GPH
0'	108	6500
5'	83	5000
10'	70	4200
15'	40	2400



Model	PFSEP5010TB
Basin	18" Dia x 30" Deep Structural Foam
Inlet	4", Rubber Grommet or Cast Iron Hub
Cover	Structural Foam, 2" Vent, One Piece or Two Piece
HP, RPM	1/2, 115/1, 3450
Max Lift	18 Ft
Max Pressure	7.9 psi
Cord Length	10'
Construction	Cast Iron
Impeller	Thermoplastic
Solids	2"
Discharge	2" or 3" Vertical
Disch. Piping	Sch40 PVC, w/Air Bleed Hole
Disch. Valve	2" or 3" PVC Compression, Check
Automatic	Tethered Float



Power-Flo Pumps & Systems

a Power-Flo Technologies company

SEWAGE PUMPS

Sewage Pumps

PFSE Series



Pump Body Cast Iron Construction
Impeller 2 Vane open impeller

- Carbon ceramic seal 1/2 hp thru 1 hp
- Silicon carbide seal 1-1/2 hp thru 3 hp
- Heavy duty design
- Inboard mechanical seal
- 15 Ft cord on 1/2 - 1 Hp
- 25 Ft cord on 1-1/2 - 3 Hp

* High Temperature model for 200°F applications

MODEL	HP	VOLTS/PHASE	DISCHARGE SIZE	MAX SOLIDS	MAX HEAD	MAX GPM	CONTROL PANELS**	
							SIMPLEX	DUPLEX
PFSE51	1/2	115/1	2"	2"	25'	160	PF100	PF200
PFSE51A	1/2	115/1	2"	2"	25'	160	N/R	N/R
PFSE51HT*	1/2	115/1	2"	2"	25'	160	PF100	PF200
PFSE52	1/2	230/1	2"	2"	25'	160	PF103	PF203
PFSE594	1/2	200-230/3	2"	2"	25'	160	PF1004-O	PF2004-O
PFSE544	1/2	460/3	2"	2"	25'	160	PF1005-O	PF2005-O
PFSE774	3/4	200-230/1	2"	2"	30'	190	PF113	PF213
PFSE794	3/4	200-230/3	2"	2"	30'	190	PF1014-O	PF2014-O
PFSE744	3/4	460/3	2"	2"	30'	190	PF1015-O	PF2015-O
PFCSE1074	1	200-230/1	2"	2"	38'	220	PF113	PF213
PFCSE1094	1	200-230/3	2"	2"	38'	220	PF1014-O	PF2014-O
PFCSE1044	1	460/3	2"	2"	38'	220	PF1015-O	PF2015-O
PFCSE1524	1-1/2	230/1	3"	2-1/2"	41'	375	PF1023	PF2023
PFCSE1594	1-1/2	230/3	3"	2-1/2"	41'	375	PF1024-O	PF2024-O
PFCSE1544	1-1/2	460/3	3"	2-1/2"	41'	375	PF1025-O	PF2025-O
PFCSE2024	2	230/1	3"	2-1/2"	52'	410	PF1023	PF2023
PFCSE2094	2	230/3	3"	2-1/2"	52'	410	PF1024-O-20	PF2024-O-20
PFCSE2044	2	460/3	3"	2-1/2"	52'	410	PF1025-O	PF2025-O
PFCSE3024	3	230/1	3"	2-1/2"	65'	435	PF1033-40	PF2033-40
PFCSE3094	3	230/3	3"	2-1/2"	65'	435	PF1034-O-20	PF2034-O-20
PFCSE3044	3	460/3	3"	2-1/2"	65'	435	PF1035-O	PF2035-O

(**) PF + 3 digit number is Economy Panel, PF + 4 digit number is Standard Panel

See page 20 for Standard panels and options.

N/R = Not Required



Power-Flo Pumps & Systems

a Power-Flo Technologies company

SEWAGE PUMPS

PF4NC Series

Solids Handling Pumps



Pump Body Cast Iron Construction
Impeller Open type impeller on 4" models

- Overtemp protection
- Dual seals on all models
- Moisture & temperature sensors
- Oil filled motors
- 30 Ft cords
- Explosion proof models available
- 1750 RPM

MODEL	HP	VOLTS/ PHASE	DISCHARGE SIZE	MAX SOLIDS	MAX HEAD	MAX GPM	CONTROL PANELS	
							SIMPLEX	DUPLEX
PFC4NC4524	4.5	230/1	4"	3"	40'	600	PF1053NC-COST-40	PF2053NC-COST-40
PFC4NC4534	4.5	230/3	4"	3"	40'	600	PF1054-OST-20	PF2054-OST-20
PFC4NC4544	4.5	460/3	4"	3"	40'	600	PF1055-OST	PF2055-OST
PFC4NC4564	4.5	208/3	4"	3"	40'	600	PF1052-OST-25	PF2052-OST-25
PFC4NC7534	7.5	230/3	4"	3"	50'	700	PF1084-OST-25	PF2084-OST-25
PFC4NC7544	7.5	460/3	4"	3"	50'	700	PF1085-OST-20	PF2085-OST-20
PFC4NC7564	7.5	208/3	4"	3"	50'	700	PF1082-OST-32	PF2082-OST-32
PFC4NC11334	11.3	230/3	4"	3"	70'	875	PF1124-OST-32	PF2124-OST-32
PFC4NC11344	11.3	460/3	4"	3"	70'	875	PF1125-OST-20	PF2125-OST-20
PFC4NC11364	11.3	208/3	4"	3"	70'	875	PF1122-OST-65	PF2122-OST-65
PFC4NC15034	15	230/3	4"	3"	80'	925	PF1154-OST-65	PF2154-OST-65
PFC4NC15044	15	460/3	4"	3"	80'	925	PF1155-OST-20	PF2155-OST-20

See page 20 for Standard panels and options.



Power-Flo Pumps & Systems

a Power-Flo Technologies company

GRINDER PUMPS

PFG Series Grinder Pumps



Impeller 12 Vane, 2Hp Bronze, 3, 5, 7.5Hp Cast Iron
Cutter Blades Hardened SS cutter & shredding ring

- Carbon ceramic seals on 2HP
- Silicon carbide outer seal on 3, 5 & 7.5HP models
- 2HP offers both single or double seal
- External capacitors on single phase
- 20 Ft cords on 2 Hp and 30 Ft on 3, 5 & 7.5 Hp
- Pumps are oil filled

MODEL	HP	VOLTS/ PHASE	DISCHARGE SIZE	MAX HEAD	MAX GPM	CONTROL PANELS	
						SIMPLEX	DUPLEX
PFG2002HV	2	200/1	1-1/4"	100	58	PF1021-C	PF2021-C
PFG2022HV	2	230/1	1-1/4"	100	58	PF1023-C	PF2023-C
PFG2062HV	2	200/3	1-1/4"	100	58	PF1022-O	PF2022-O
PFG2032HV	2	230/3	1-1/4"	100	58	PF1024-O	PF2024-O
PFG2042HV	2	460/3	1-1/4"	100	58	PF1025-O	PF2025-O
PFG2002HH	2	200/1	1-1/4"	125	30	PF1021-C	PF2021-C
PFG2022HH	2	230/1	1-1/4"	125	30	PF1023-C	PF2023-C
PFG2032HH	2	230/3	1-1/4"	125	30	PF1024-O	PF2024-O
PFG2062HH	2	200/3	1-1/4"	125	30	PF1022-O	PF2022-O
PFG2042HH	2	460/3	1-1/4"	125	30	PF1025-O	PF2025-O
PFG3022	3	230/1	2"	84	103	PF1053-COST-40	PF2053-COST-40
PFG3032	3	230/3	2"	84	103	PF1034-OST-20	PF2034-OST-20
PFG3042	3	460/3	2"	84	103	PF1035-OST	PF2035-OST
PFG5022	5	230/1	2"	130	103	PF1053-COST-40	PF2053-COST-40
PFG5032	5	230/3	2"	130	103	PF1054-OST-25	PF2054-OST-25
PFG5042	5	460/3	2"	130	103	PF1055-OST	PF2055-OST
PFG7532	7.5	230/3	2"	136	103	PF1084-OST-25	PF2084-OST-25
PFG7542	7.5	460/3	2"	136	103	PF1085-OST-20	PF2085-OST-20

See page 20 for Standard panels and options.



WATER-FEATURE PUMPS

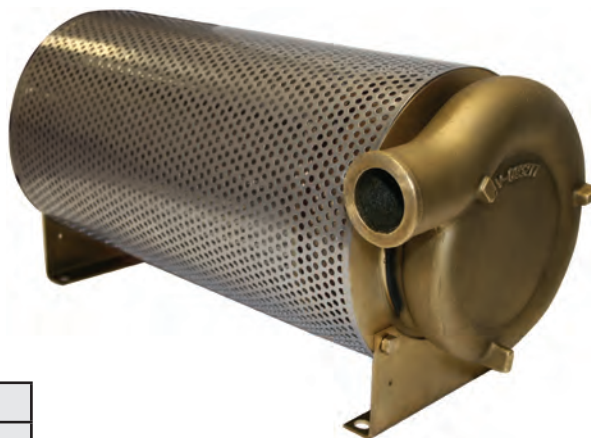
Water-Feature Pumps

PFU Series

Model	PFU31	PFU51	PFU71	PFU102	PFU152	PFU202
HP	1/3	1/2	3/4	1	1-1/2	2
RPM	3450	3450	3450	3450	3450	3450
Electrical	115v 1ph	115v 1ph	115v 1ph	230v 1ph	230v 1ph	230v 1ph
Shut Off (ft)	34'	42'	50'	55'	60'	68'
Cord Length	12'	12'	12'	12'	12'	12'
Construction	Brass/SS	Brass/SS	Brass/SS	Brass/SS	Brass/SS	Brass/SS
Discharge Hose Con. FNPT	1-3/4" 1"	1-3/4" 1"	1-3/4" 1"	1-3/4" 1"	2" 1-1/4"	2" 1-1/4"

Features:

- Vacuum pressure impregnation "VPI" Sealed Insulation System, Class H motors.
- Carbon Ceramic seal
- 1-3/4" Hose connection & 1" NPTF on 1/3HP - 1HP
- 2" Hose connection & 1-1/4" NPTF on 1-1/2HP & 2HP
- Single row ball bearings, both ends



Total Head	MODEL (gpm)					
	PFU31	PFU51	PFU71	PFU102	PFU152	PFU202
10'	62	76	94	100	112	126
20'	44	62	84	92	100	113
30'	20	43	68	76	86	100
40'	-	16	43	54	66	80
50'	-	-	-	24	38	59
60'	-	-	-	-	-	30



Power-Flo Pumps & Systems

a Power-Flo Technologies company

DEWATERING PUMPS

PF Series

Dewatering Pumps



Pump Body	Aluminum hard anodized construction
Impeller	Hardened 17-4 stainless impeller 2HP and above

- Silicon carbide outer seal
- Vacuum pressure impregnation, Class H motor
- Replaceable wear plate
- NEMA 3R control box, Optional NEMA 4 box or Dual Float control
- ** Includes internal capacitors, 65ft cord w/plug, Lift rope, female Camlock discharge fitting

Model	Motor HP	RPM	Electrical	Shut Off Head (ft)	Max Flow GPM	Discharge
PF01011	3/4	3450	115/1	41'	100	2"
PF01034	3/4	3450	460/3	41'	100	2"
PF01012	3/4	3450	230/1	41'	100	2"
PF01032	3/4	3450	230/3	41'	100	2"
PF01311	1	3450	115/1	43'	120	2"
PF01311A	1	3450	115/1	46'	120	2"
PF01311SCV **	1	3450	115/1	46'	120	2"
PF01312	1	3450	230/1	43'	120	2"
PF01332	1	3450	230/3	43'	120	2"
PF01334	1	3450	460/3	43'	120	2"
PF20111	2	3450	115/1	76'	175	2" & 3"
PF20112	2	3450	230/1	76'	175	2" & 3"
PF25132HH	2-1/2	3450	230/3	88'	150	2" & 3"
PF25132HV	2-1/2	3450	230/3	50'	300	2" & 3"
PF25134HH	2-1/2	3450	460/3	88'	150	2" & 3"
PF25134HV	2-1/2	3450	460/3	50'	300	2" & 3"
PF27112	2-3/4	3450	230/1	50'	300	2" & 3"
PF35112	3-1/2	3450	230/1	78'	250	2" & 3"
PF50112	5	3450	230/1	91'	300	2" & 3"
PF50132HV	5	3450	230/3	91'	300	2" & 3"
PF50134HV	5	3450	460/3	91'	300	2" & 3"
PF50132-2ST	5	3450	230/3	175'	185	2" & 3"
PF50134-2ST	5	3450	460/3	175'	185	2" & 3"
PF60112	6	3450	230/1	80"	450	4"
PF81032HH	10	3450	230/3	165'	450	4"
PF81032HV	10	3450	230/3	104'	605	4"
PF81034HH	10	3450	460/3	165'	450	4"
PF81034HV	10	3450	460/3	104'	605	4"
PF81532HH	15	3450	230/3	200'	600	4"
PF81532HV	15	3450	230/3	130'	800	4"
PF81534HH	15	3450	460/3	200'	600	4"
PF81534HV	15	3450	460/3	130'	800	4"
PF82532HH	25	3450	230/3	230'	800	6"
PF82532HV	25	3450	230/3	160'	1000	6"
PF82534HH	25	3450	460/3	230'	800	6"
PF82534HV	25	3450	460/3	160'	1000	6"
PF85034HH	50	3450	460/3	245'	1025	6"
PF85034HV	50	3450	460/3	190'	1425	6"



Power-Flo Pumps & Systems

a Power-Flo Technologies company

SELF PRIMING PUMPS

PFCCE Series

Close Coupled



Features:

- Tri-Voltage 208-230/460, 3 Phase ODP & TEFC motors. 1 Phase Voltage 115/230 or 230, ODP & TEFC motors.
- Class 30 cast iron construction, stainless steel hardware and shaft
- Neoprene flap valve
- Bronze impeller & volute available

MODEL	HP	MOTOR ENCLOSURE	VOLTAGE PHASE	SIZE Suction & Disch.	MAX FLOW GPM	SHUT OFF HEAD
PF3CCE1	1-1/2	ODP	115/230, 1Ph	1-1/2" x 1-1/2"	95	87
PF3CCE1-T	1-1/2	TEFC	115/230, 1Ph	1-1/2" x 1-1/2"	95	87
PF3CCE3	1-1/2	ODP	208-230/460, 3Ph	1-1/2" x 1-1/2"	95	87
PF3CCE3-T	1-1/2	TEFC	208-230/460, 3Ph	1-1/2" x 1-1/2"	95	87
PF4CCE1	2	ODP	115/230, 1Ph	1-1/2" x 1-1/2"	105	96
PF4CCE1-T	2	TEFC	115/230, 1Ph	1-1/2" x 1-1/2"	105	96
PF4CCE3	2	ODP	208-230/460, 3Ph	1-1/2" x 1-1/2"	105	96
PF4CCE3-T	2	TEFC	208-230/460, 3Ph	1-1/2" x 1-1/2"	105	96
PF5CCE1	3	ODP	115/230, 1Ph	1-1/2" x 1-1/2"	130	110
PF5CCE1-T	3	TEFC	115/230, 1Ph	1-1/2" x 1-1/2"	130	110
PF5CCE3	3	ODP	208-230/460, 3Ph	1-1/2" x 1-1/2"	130	110
PF5CCE3-T	3	TEFC	208-230/460, 3Ph	1-1/2" x 1-1/2"	130	110
PF10CCE1	5	ODP	230, 1Ph	2" x 2"	195	126
PF10CCE1-T	5	TEFC	230, 1Ph	2" x 2"	195	126
PF10CCE3	5	ODP	208-230/460, 3Ph	2" x 2"	195	126
PF10CCE3-T	5	TEFC	208-230/460, 3Ph	2" x 2"	195	126
PF15CCE3	7.5	ODP	208-230/460, 3Ph	3" x 3"	305	138
PF15CCE3-T	7.5	TEFC	208-230/460, 3Ph	3" x 3"	305	138
PF20CCE3	10	ODP	208-230/460, 3Ph	3" x 3"	400	138
PF20CCE3-T	10	TEFC	208-230/460, 3Ph	3" x 3"	400	138
PF25CCE3	15	ODP	208-230/460, 3Ph	3" x 3"	400	190
PF25CCE3-T	15	TEFC	208-230/460, 3Ph	3" x 3"	400	190



Power-Flo Pumps & Systems

a Power-Flo Technologies company

SELF PRIMING PUMPS

Frame Mount

PFCU/PFICU Series

MODEL	SIZE	MAX FLOW GPM	SHUT OFF HEAD
PF5CU	1-1/2" x 1-1/2"	125	104 FT
PF7CU	2" x 2"	137	104 FT
PF10ICU	2" x 2"	190	126 FT
PF15ICU	3" x 3"	309	133 FT
PF20ICU	3" x 3"	380	137 FT
PF25ICU	3" x 3"	440	182 FT

Available in Flex Coupled or V-Belt (right hand, Left hand & in-line top mount) drive Assemblies



END SUCTION PUMPS

Frame Mounted

PFHCU/PFCU Series



MODEL	SIZE	MAX FLOW GPM	SHUT OFF HEAD
PF2020HCU	2" x 2"	162	265 FT
PF4030HCU	4" x 3"	700	340 FT
PF2025CU7	2" x 2.5"	340	200 FT
PF2025CU9	2" x 2.5"	370	400 FT
PF3040CU9	3" x 4"	940	310 FT
PF4050CU9	4" x 5"	1120	330 FT

Close Coupled or Framed Mounted Stainless Steel Impellers
 Optional Epoxy Coating
 Optional Baseplates, Motors & Couplings
 Rebuild Parts



Power-Flo Pumps & Systems

a Power-Flo Technologies company

WET ROTOR CIRCULATOR PUMPS

Flange Connection

PFWRC

Features:

Power-Flo circulator pumps are low noise, low leakage, reliable operation and easy installation. Single, three speed compact, and variable speed **HIGH** efficiency wet rotor circulators for closed loop (cast iron volute) hydronic heating and cooling circulation and open loop (bronze and stainless steel) domestic water recirculation applications. Liquid temperatures 32°F to 230°F and a maximum system pressure of 145 PSI. Variable speed includes Electronically Commutated variable speed programmable high efficiency motor. **FOR INDOOR USE ONLY**. 3 Year warranty.
Liquid temperatures 32°F to 230°F and a maximum system



MODEL/PART NUMBER	VOLUTE MATERIAL	VOLTS/ PHASE	AMPS	WATTS	SYSTEM TYPE	CONNECTION	MAX HEAD	MAX FLOW	WT lbs
SINGLE SPEED									
PFWRC3737C1F	Cast Iron	115/1	3.0	335	Closed	Flange	36 ft	36 gpm	12.5
PFWRC3737C2F	Cast Iron	230/1	1.5	335	Closed	Flange	36 ft	36 gpm	12.5
PFWRC3737B1F	Bronze	115/1	3.0	335	Open	Flange	36 ft	36 gpm	12.5
3 SPEED									
PFWRC2017C1F	Cast Iron	115/1	0.9/0.7/0.5	100/70/55	Closed	Flange	19 ft	17 gpm	7.25
PFWRC2727C1F	Cast Iron	115/1	1.6/1.5/1.3	185/170/135	Closed	Flange	27 ft	27gpm	11.25
PFWRC2727C2F	Cast Iron	230/1	.8/.75/.65	185/179/135	Closed	Flange	27 ft	27 gpm	11.25
PFWRC3032C1F	Cast Iron	115/1	1.8/1.7/1.2	200/190/135	Closed	Flange	30 ft	32 gpm	11.25
PFWRC3032C2F	Cast Iron	230/1	.9/.85/.6	200/190/135	Closed	Flange	30 ft	32 gpm	11.25
PFWRC2644C1F	Cast Iron	115/1	2.0/1.7/1.2	230/190/135	Closed	Flange	26 ft	44 gpm	13.5
PFWRC2644C2F	Cast Iron	230/1	1.0/.85/0.6	230/190/135	Closed	Flange	26 ft	44 gpm	13.5
PFWRC2727B1F	Bronze	115/1	1.6/1.5/1.3	185/170/135	Open	Flange	27 ft	27 gpm	11.25
PFWRC2644B1F	Bronze	115/1	2.0/1.7/1.2	230/190/135	Open	Flange	26 ft	44 gpm	13.5
PFWRC3032S1F	Stainless	115/1	1.8/1.7/1.2	200/190/135	Open	Flange	30 ft	32 gpm	11.25
VARIABLE SPEED									
PFWC2014C1FECEM	Cast Iron	115/1	.08 min - .67 max	5 min 45 max	Closed	Flange	20 ft	14 gpm	9.5



Power-Flo Pumps & Systems

a Power-Flo Technologies company

WET ROTOR CIRCULATOR PUMPS

Union Connection

PFWRC

Features:

These Power-Flo Circulator Pumps are designed to be installed in residential potable domestic hot water systems to provide recirculation (in a RETRO-FIT application where NO dedicated recirculation pipe has been installed) of domestic hot water resulting in "instant" hot water at fixtures throughout the house. This unit is designed to install ON TOP OF THE WATER HEATER on hot water supply side and will connect directly onto the supply nipple on top of the heater. This pump will come equipped with a standard terminal box with 1/2" FNPT to "Hard wire" direct to 115 VAC **AND** will come with a 6 Ft. long 3 prong electric cord and strain relief connection for "outlet plug in" installations. Liquid temperature 32°F - 230°F, with maximum system pressure of 145 psi. **3 year Warranty**



MODEL/PART NUMBER	VOLUTE MATERIAL	VOLTS/ PHASE	AMPS	WATTS	SYSTEM TYPE	CONNECTION	MAX HEAD	MAX FLOW	WT lbs
PFWC6751U	Stainless	115/1	0.22	25	Open	Union	5 ft	6 gpm	5



Power-Flo Pumps & Systems

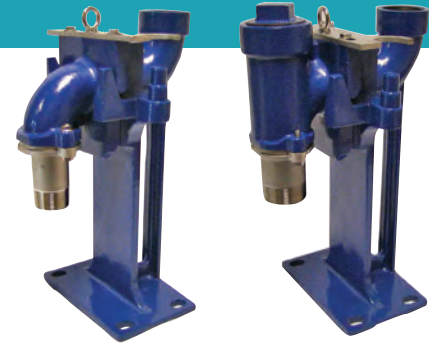
a Power-Flo Technologies company

ACCESSORIES

Base Elbows for Rail Systems

- Ductile iron construction
- Powder coated for corrosion resistance
- Stainless steel upper and lower guide brackets standard
- Compact design for easy installation
- Slide couplings with check valve on 1¼", 1½", 2"

Stainless Intermediates and stainless lifting chain kits also available.



PF125, 150, 200, 300SC

PF125, 150, 200SCV



PF400SC, PF600SC & PF800SC

Model No	SIZE	with Check Valve	Max Pump Weight	Guide Rail Pins to accept
	M = Male, F = Female			
PF125SC	1¼" NPTM x 2" NPTF	PF125SCV	200 lbs	3/4" & 1"
PF150SC	1½" NPTM x 2" NPTF	PF150SCV	200 lbs	3/4" & 1"
PF200SC	2" NPTM x 2" NPTF	PF200SCV	200 lbs	3/4" & 1"
PF300SC	3" NPTM x 3" NPTF	--	400 lbs	3/4", 1" 1¼"
PF400SC	4" x 4" ANSI Flanges	--	2000 lbs	2"
PF600SC	6" x 6" ANSI Flanges	--	2000 lbs	2"
PF800SC	8" x 8" ANSI Flanges	--	4000 lbs	2" & 3"

Indoor/Outdoor High Water Alarms



NEMA 3R Indoor/Outdoor Alarm - P/N: PF-HWA & PF-HWA15

Designed to sound an 85 db @ 10 feet audible alarm and illuminate a red beacon to notify an alarm situation. Equipped with "power on" light, test switch and horn/silence with auto reset.

PF-HWA15 - Includes mechanical float with 15 ft cord.

PF-HWA - Does not come with a float. SGMNO float must be ordered separately, available in variety of lengths.



Power-Flo Pumps & Systems

a Power-Flo Technologies company

ACCESSORIES

Pipe Mounted Level Controls



PUMP DOWN APPLICATION					
PF15PMSPDT	15 Ft	PF20PMSPDT	20 Ft		
PF15PMPD1WP	15 Ft	PF20PMPD1WP	20 Ft		
PF15PMPD2WP	15 Ft	PF20PMPD2WP	20 Ft	PF50PMPD1WP	50 Ft
PF15PMPDWOP	15 Ft	PF20PMPDWOP	20 Ft	PF25PMPDWOP	25 Ft
PF17A43*	15 Ft			PF30PMPDWOP	30 Ft

* For High Temperature Application; 200°F, up to 1/2 Hp, 1 Phase, 115 VAC, 13 amps, with piggy-back plug.

D = Pump Down, 1 = 120 VAC, 2 = 230 VAC, WP = With Plug, WOP = With Out Plug.

Wide Angle Mechanical Level Controls are constructed of high impact corrosion resistant PVC housing, heavy-duty contacts with flexible SJOW, water-resistant cable with or without piggy-back plug. For pipe mounted applications.

PMSPDT, (Single Pole Double Throw) pump down or pump up series - designed for direct control of pumps up to 1/2 Hp, 1 Phase, 60 Hz. at 120 VAC, or 1Hp or less at 230 VAC. Can be wired for either N.O. (normally Open), pump down or N.C. (Normally Closed), pump up. Max. pump run current 13 amps, Max. pump start current 85 amps. Pumping range from 7 to 36 inches. 16 gauge, 2 conductor cable.

PMPD, pump down series - designed for direct control of pumps up to 3/4 Hp, 1 Phase, 60 Hz. at 120 VAC, or 2Hp or less at 230 VAC, Max. pump run current 15 amps, Max. pump start current 85 amps. Pumping range from 7 to 36 inches. 14 gauge, 2 conductor cable.

Vertical OEM Replacement Level Controls

PUMP MOUNTED VERTICAL REPLACEMENT SWITCHES		
Flexible 16 gauge, 2 conductor (UL, CSC) SJOW or SJTOW, water-resistant (CPE) cord, with piggy-back plug		
Part No.	Cord Length	Used on Pump
PF113647	10 Ft	PF33VF
PF100829	15 Ft	PFS411VF
PF512041	20 Ft	PF33VFX, PF50VFX, PF72VF, PF75VF PFEV512VF, PFV512VF
PF512041A	30 Ft	PFEV512VFX, PFV512VFX

PUMP MOUNTED VERTICAL REPLACEMENT SWITCHES		
Vertical, Mechatronic, Normally Open (N/O), reinforced thermoplastic, SJTW 18AWG/3C cord with piggy-back plug		
Part No.	Cord Length	Used on Pump
PFEV510D1810P1	10 Ft.	PFSPPPP3328601F10, PFSPCPC5030721F10, PFSWCPC50181081F10
PFTFS10D1820P1	20 Ft.	PFSPCPC5030721F20



OEM, Pump Replacement Level Controls - For OEM replacement for pump down applications.

Designed for direct control of pumps up to 1/3 and 1/2 Hp, 1 Phase, 60 Hz. at 120 VAC, Max. pump run current 13 amps, Max. pump start current 60 amps or 1 Hp or less at 230 VAC, Max. pump run current 12 amps, Max. pump start current 60 amps.



Power-Flo Pumps & Systems

a Power-Flo Technologies company

ACCESSORIES

Narrow Angle, Pilot Duty Level Controls

NORMALLY OPEN PART NO.	CORD LENGTH
PF15SGMNO	15 Ft
PF20SGMNO	20 Ft
PF30SGMNO	30 Ft
PF50SGMNO	50 Ft



Narrow Angle Mechanical Level Controls are constructed of high impact corrosion resistant polypropylene housing rated for 140°F with snap action contacts and 18 gauge, 2 conductor, SJOW water-resistant cord. Control differential of 1.5 inches above or below horizontal. Maximum water depth of 30 feet, 13 psi. 5 amp, 125/250vac rating.

SGMNO series, Designed to activate pump control panels and alarms. **Normally Open (NO), High Level**, turns on (closes) when the float tips slightly **above** horizontal, signaling a high level, and turns off (open) when the float drops slightly **below** horizontal.

Narrow Angle, Pilot Duty Level Controls

SUSPENDED PART NO.	PIPE MOUNTED PART NO.	CORD LENGTH
PF15SGMSPDTWE	PF15SGMSPDTPC	15 Ft
PF20SGMSPDTWE	PF20SGMSPDTPC	20 Ft
PF30SGMSPDTWE	PF30SGMSPDTPC	30 Ft
PF50SGMSPDTWE	PF50SGMSPDTPC	50 Ft



Suspended Floats includes external Weight with each float.
Pipe Mounted Floats includes Clamp with each float.

Narrow Angle Mechanical Level Controls are constructed of high impact corrosion resistant polypropylene housing rated for 140°F with snap action contacts and 18 gauge, 3 conductor, SJOW water-resistant cord.

SGMSPDT series, Designed to activate pump control panels and alarms. Can be wired for either normally open (NO), pump down operation, or normally closed (NC), pump up operation. Control differential of 1.5 inches above or below horizontal. Maximum water depth of 30 feet, 13 psi. 5 amp, 125/250vac rating.



Power-Flo Pumps & Systems

a Power-Flo Technologies company

CONTROL PANELS

Standard Control Panels



Features:

For 115/200-230 Volt, 1 Phase & 200-230/460 Volt, 3 Phase - 1/3 to 60HP

- NEMA 4X enclosure, Fiberglass w/External Mounting Feet
- Stainless door latches with padlock hasp
- Pump run light, one per pump
- "Hand-Off-Auto" toggle switch, one per pump
- Aluminum Sub Plate for Switch and Light mounting
- 3 Pole, IEC Contactors
- Motor Circuit Breakers
- Control Circuit Breakers
- Flashing Red Alarm Light
- High decibel Audible Alarm
- Alarm "On/Off/Test" toggle switch
- Raised Field wiring terminal strip
- UL 508A Listing

HP	Volts/Ph	Simplex	Duplex
0.5	230/3	PF1004	PF2004
0.5	460/3	PF1005	PF2005
0.75, 1	230/3	PF1014	PF2014
0.75, 1	460/3	PF1015	PF2015
2.0	200/1	PF1021	PF2021
2.0	200/1	PF1021-C	PF2021-C
1.5, 2.0	230/1	PF1023	PF2023
2.0	230/1	PF1023-C	PF2023-C
2.0	200/3	PF1022	PF2022
1.5, 2.0	230/3	PF1024	PF2024
1.5, 2.0	460/3	PF1025	PF2025
3	230/1	PF1033-C	PF2033-C
2.8, 3	230/1	PF1033	PF2033
3	208/3	PF1032	PF2032
2.8, 3	230/3	PF1034	PF2034
2.8, 3	460/3	PF1035	PF2035

HP	Volts/Ph	Simplex	Duplex
3.7	230/1	PF1043	PF2043
3.7	208/3	PF1042	PF2042
3.7	230/3	PF1044	PF2044
3.7	460/3	PF1045	PF2045
4.5, 5	230/1	PF1053-C	PF2053-C
4.5, 5	230/1	PF1053	PF2053
4.5, 5	208/3	PF1052	PF2052
4.5, 5	230/3	PF1054	PF2054
4.5, 5	460/3	PF1055	PF2055
7.5	230/1	PF1083-C	PF2083-C
7.5	230/1	PF1083	PF2083
7.5	230/3	PF1084	PF2084
7.5	208/3	PF1082	PF2082
7.5	460/3	PF1085	PF2085
9	230/3	PF1094	PF2094
9	460/3	PF1095	PF2095

HP	Volts/Ph	Simplex	Duplex
11.3	208/3	PF1122	PF2122
11.3, 12	230/3	PF1124	PF2124
11.3, 12	460/3	PF1125	PF2125
13	230/3	PF1134	PF2134
13	460/3	PF1135	PF2135
15	230/3	PF1154	PF2154
15	460/3	PF1155	PF2155
18	230/3	PF1184	PF2184
18	460/3	PF1185	PF2185
24	230/3	PF1244	PF2244
24	460/3	PF1245	PF2245
30	230/3	PF1304	PF2304
30	460/3	PF1305	PF2305
36	230/3	PF1364	PF2364
36	460/3	PF1365	PF2365
48	460/3	PF1485	PF2485
60	460/3	PF1605	PF2605



Power-Flo Pumps & Systems

a Power-Flo Technologies company

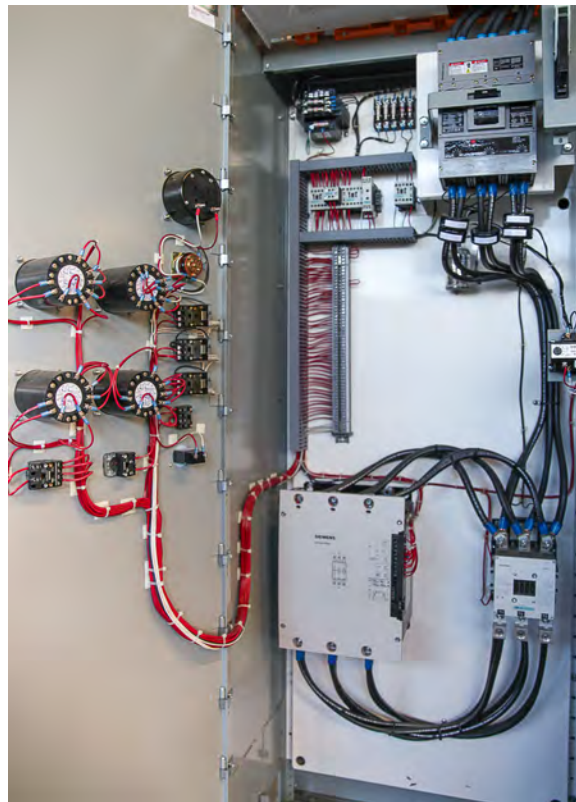
SOLUTIONS

Power-Flo Pumps & Systems stocks key items which support motor control requirements. From take-off, engineering design, submittal drawings to on time fabrication, delivery and start-up. Power-Flo Pumps & Systems has the capability to meet any customer requirement.

Our fabrication facility also engineers and designs custom motor controls and related panels for municipal and public projects.

ENGINEERING SOLUTIONS

- Motor Control Centers
- Automatic Transfer Switches 150A-2000A
- Variable Frequency Drives with By-pass Panel
- Wye-Delta, Part-Winding, Auto Transformers
- Reduced Voltage Starters
- Two-Speed Nema Rated Starters
- IEC and Nema Rated Starters
- Control Stations
- Nema 1, Nema 3R, Nema 12 and Nema 4X Enclosures - ALL IN STOCK
- PLC's & Automation Products
- Industrial and Plug-in Relays
- Pilot Devices, 30MM & 22MM



CUSTOM PANEL SOLUTIONS

Power-Flo Pumps & Systems Custom Panel Shop is a UL508 recognized builder of custom Control Panels in the United States and Canada. The UL label assures that the control panels are manufactured to meet all requirements of Underwriters Laboratories, including the use of all UL labeled components.



Power-Flo Pumps & Systems

a Power-Flo Technologies company