

100% Solids, "2 in 1" emergency patch, and leak seal repair epoxy putty.
ARC 5ES repair putty is designed to:

- Patch and seal leaks up to 3 mm (120 mil) diameter
- Cure underwater and on damp surfaces
- Meet the requirements of NSF 61 for cold water service
- Easily apply by kneading together and press-affixing to surface

Application Areas

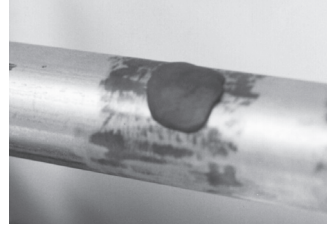
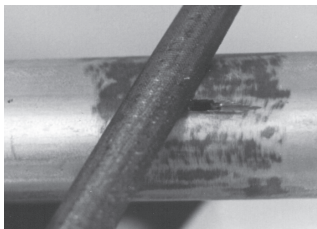
- Pitted castings
- Adhere signs
- Patch radiators
- Fiberglass pipe
- Leaking battery cases
- Water tanks
- Electrical boxes
- Weld seams

Packaging and Coverage

Nominal, based on a 3 mm (120 mils) thickness

- 114 gram "stick" covers 20,00 cm² (3.10 in²).
- 12 sticks to a case

Color: Dark Gray



Surface Preparation

The surface must be free of oil, grease, and dirt. Best results are achieved when the surface is roughened by either hand or power tool.

Mixing

To protect against irritation light weight plastic gloves should be worn. Break off the required amount from the stick and knead in hand until uniform color is achieved.

Application

Apply the material immediately after mixed, pressing firmly onto surface. Usable life after mixing is 3 – 5 minutes. Once cured the ARC 5ES can be sanded, drilled, or machined as required.



Features and Benefits

- **Rapid cure properties**
 - Faster return to service
 - Emergency leak sealing
- **High viscosity**
 - Easy to apply
 - Applies to wet surfaces
- **"2 in 1" packaging**
 - Enhances safe use
- **Moisture tolerant formula**
 - Bonding to wet surfaces
 - Versatile epoxy



Certified to NSF/ANSI/CAN 61

Technical Data

| | | | |
|----------------------------------|---|---|-------------------------------------|
| Composition | Matrix | A modified epoxy resin reacted with aliphatic amine curing agent | |
| | Reinforcement | Proprietary quartz material pretreated with polymeric coupling agent | |
| Color | | Dark Gray | |
| Consistency | | Putty Like | |
| Density | | 2.2 g/cc | 136 lb./cu.ft. |
| Cure Time to 90% Shore D | | 9 minutes | |
| Dielectric Strength | (ASTM D 149) | 12 v/μ | 300 V/Mil |
| Hardness Shore D | | 80 | |
| Compressive Strength | (ASTM D 695) | 280 kg/cm ² (27.4 MPa) | 4,000 psi |
| Lap Shear Adhesion | (ASTM D 1002) | 120 kg/cm ² (11.8 MPa) 300 kg/cm ² (29.4 MPa) 150 kg/cm ² (14.7 MPa) | 1,700 psi 4,200 psi 2,200 psi |
| | Unclean SSPC SP3 - Dry SSPC SP3 - Wet | | |
| Working Time at 21°C (70°F) | | 5 minutes | |
| Temperature Limit | Wet Dry | 54°C 121°C | 130°F 250°F |
| Shelf Lift (unopened containers) | | 2 years [stored between 10°C (50°F) and 32°C (90°F) in dry, covered facility] | |